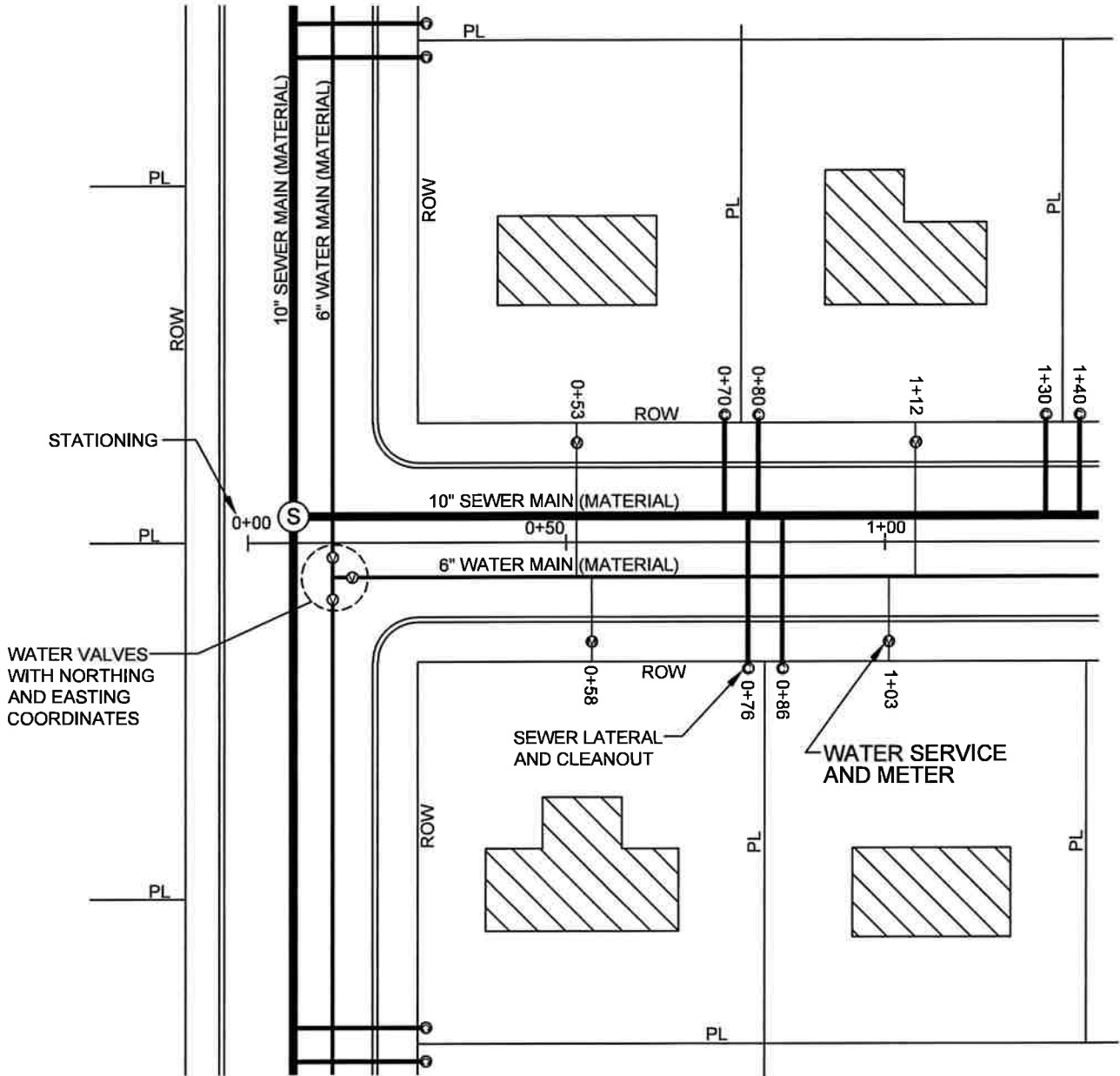


O:\standets\REVISED 2024\REVISED-RENUMBERED 2024\G-102.1.dwg, 1/31/2024 11:14:38 AM, 1:1



WATER VALVES WITH NORTHING AND EASTING COORDINATES

**NOTES:**

1. AS-BUILT DRAWINGS MUST BE COMPILED BY CONTRACTOR AND SUBMITTED TO EASTON UTILITIES AT COMPLETION OF PROJECT AND PRIOR TO ACCEPTANCE OF SYSTEM.
2. AS-BUILT DRAWINGS TO BE SUBMITTED BY A LICENSED ENGINEER OR SURVEYOR.
3. NORTHING AND EASTING COORDINATES MUST BE SHOWN FOR ALL VALVES AND FITTINGS.



Life. Made better.™

**APPROVAL**

*[Signature]*

EU ENGINEERING DEPARTMENT

*1/31/2024*

DATE

**REVISED**

**EASTON UTILITIES  
STANDARD DETAILS**

**WATER SERVICE & SEWER  
LATERAL AS-BUILT  
DRAWING**

**ISSUED: JANUARY 2024**

**STANDARD NO.: G-102.1**